



Message from the Executive Director
Page 2



Santa's Elves



2022 Christmas in The Museum
Page 7

The Quarterly Newsletter of the Model A Ford Foundation, Incorporated

THE "A" PRESERVER

~ Enhancing the preservation of the Model A Ford and its Era ~



Message from the President: Joe Fox

With the truly memorable 'Model A Days' behind us, it's time to usher in the winter months and Holiday Season. Here in the Midwest that means... chilly weather, and... snow! The Gilmore Campus has already seen their share of the white stuff, but the staff was able to keep up with it for you to be able to get around during your visit. That's right, the Model A Museum and the Gilmore are open year 'round, with the exception of a few Holidays!

The entire Gilmore Complex was decorated to the max with a spectacular Christmas lights display. To add to that, MAFFI Executive Director John Marshall, with 'the Crew' and the 'Auxiliary Crew' (wives!), spent an entire day decorating our Museum; and what a site it was! I hope you were able to see it firsthand! (See photos on page 7.)

If you need to find just the right something for that special 'car nut' in your life, the Gilmore Gift Shop is the place to go. Of special interest, of course, are the many Model A Museum items you will find there. Some of the items are available through the MAFFI website. Also, there is a wealth of other good information there as well. <https://www.maffi.org>

If you haven't been to the Museum lately, then... you haven't been to the Museum! I say that because we are always adding new displays, rotating cars in & out, and otherwise making adjustments to our exhibits to 'keep it fresh'. Why not put a trip to Hickory Corners at the top of your 2023 travel plans?

Although activity slows down during the winter months, your MAFFI Trustees are keeping busy 'behind the scenes'. For example, we have just implemented a new system that will better allow us to keep track of Inventory and much more. We will soon employ a new Fleet Maintenance program, and our Acquisitions Committee is constantly reviewing potential donations of cars and other items.

I'd like to give a shout-out to two very special organizations, the Model A Restorers Club (MARC) and the Model A Ford Club of America (MAFCA). These two groups, and especially their members, are a significant part of MAFFI's support network. These are car clubs, very different from this foundation. MAFFI exists to promote, establish and maintain our wonderful Museum, and to provide many educational opportunities. If you haven't already, I strongly urge you to join both of these fine organizations and enjoy the many benefits that they offer.

Finally, please don't forget to lend your financial support to the Museum. Remember, MAFFI is a 501(c)(3) organization, so your donations are fully tax deductible. Let's work together to keep this fine institution alive and well.

Until the next 'A' Preserver arrives, you can keep up to date by following the MAFFI Facebook Group... MAFFI – Model A Ford Foundation, Inc. Happy New Year!~ Joe

Message from the Executive Director: John Marshall

To date we have 1846 members and clubs listed on our roster. Unfortunately, 65 members have not renewed from 2021 and 171 have not renewed from 2022. If you haven't renewed yet, please do so now. We have tried to make re-registration as easy and cost effective as possible. You can now update your membership on the MAFFI website, WWW.MAFFI.ORG with the click of a button using PayPal. Also, if you have recently moved, had a change of address, or are not sure if your membership is current, please email me at ExecutiveDirector@maffi.org. We need and appreciate your continued support.

This year's first two-day Model A Day celebration featuring Model A and AA Trucks was a success. We were able to sign up over 100 new members, including three new Life Members! It was great to see and interact with our members in person again. Like everything new, there were a few minor glitches, but we will learn from these and hope to make next years' event even better.

You should have received the annual MAFFI Holiday donation letter in December. Please, consider making a holiday donation to the Museum or Endowment Funds, if you have not done so already. All donations are tax deductible, and every donation goes directly to operate the museum and ensure its existence for future generations to enjoy.

Happy Holidays to you all, please stay safe and I hope to see you soon at the Museum! ~ John

Does Your Model A Club Have a MAFFI Liaison?

We are making an effort to reach out to each club that belongs to MAFFI to make sure you know what is going on within the organization. We are encouraging each club to appoint a MAFFI Liaison so we can get this information to you. If your club currently has a designated Liaison for MAFFI, we are excited to be working with them. If not, please consider appointing one at your next club meeting. Please send their name, club affiliation and email address to: Mike Dubreuil clubcontact@maffi.org



Editors Note: Happy Begg

Winter has arrived in Hickory Corners and the Museum is ready for your visit! The Model A Museum is open year round, although, the unheated barns on the campus are not. Still, lots to see and enjoy!

Work has already begun on Model A Days 2023. It's not too soon to begin planning your visit. As always, it will be held the 3rd Friday and Saturday in September. Keep your eye on the website (www.maffi.org) for registration information for special events during the weekend. Stay warm!~ Happy

MAFFI Mission Statement

The Model A Ford Foundation, Inc. seeks to preserve Model A Fords and related memorabilia, encourage research, and educate present and future generations.

Publishers Statement

The "A" Preserver is published quarterly by the Model A Ford Foundation Incorporated, PO Box 28, Peotone, IL. 60468-0028, with editorial offices located at 1811 Salem Church Road, Irmo, SC 29063. MAFFI is a tax-exempt educational foundation incorporated under the laws of the United States Internal Revenue Service 501(c)(3). Subscriptions are included with tax-deductible membership to MAFFI at varying rates. All rights reserved. Material in this publication may not be stored or reproduced in any form without written permission. For membership information or reproduction permission, write: Executive Director, MAFFI, PO Box 28, Peotone, IL. 60468-0028. US postage paid at Newton, MA and other locations.



Museum Membership dues now payable online

You can now renew your membership using secure PayPal on the Foundation website. This is another way you can help the Foundation better utilize funding in the operation of your Model A Museum.

Support the MODEL "A" MUSEUM with a lifelong tribute
BRICK ORDER FORM - \$150 per BRICK
3 line message-20 Characters/line including spaces & punctuation
17 Characters for CAPITAL LETTERS

1 2 3 4 5 6 7 8 9 10 11 12 13 14 15 16 17 18 19 20

Purchaser's Name: _____

Address _____

City/State/Zip _____

Phone _____ Email _____

Mail form and check payable to MAFFI, PO Box 28, Peotone, IL 60468-0028

MAFFI Membership Application

The Model A Ford is a symbol of Americana. MAFFI is dedicated to the preservation of the Model A and associated historical information. By joining MAFFI, you will help meet that goal while receiving an informative quarterly publication and other benefits. Your membership donation is tax deductible under Internal Revenue Service rule 501 (c)3 and will help with MAFFI's many projects and worthwhile goals.

Name: _____

Address: _____

City: _____ State: _____ Zip: _____

Telephone: _____ E-mail Address: _____

MAFCA/MARC Chapter _____

Family Membership Category:

Annual (\$25.00) _____ Three Years (\$70.00) _____ Life Member (\$350.00) _____

Club Donation: \$ _____ TOTAL AMOUNT ENCLOSED: \$ _____

Mail this form with your payment to: Model "A" Ford Foundation, Inc., P O Box 28, Peotone, IL 60468-0028.

Museum Membership & Contributions

Members play a critical role in helping care for the Model A Ford Museum and enjoy unlimited free admission and other benefits. Consider becoming a member to support the Model A Ford Museum. With each membership, access to the Gilmore Car Museum is included! The Gilmore is the home of the Model A Ford Museum and the membership allows 2 family adult admissions (married couple or parent and adult child) to the entire Gilmore Car Museum Campus. Below are our New Members from 23 August 2022 thru 27 November 2022.

LIFETIME

Paula Reinhardt, Macomb, MI
Ben Evans, Indian River, MI
Randy & Sandra Maxwell, Rodney, MI
John DeVore, Cary, NC

Tim & Sharon Schafer, Grand Haven, MI
Gail Schafer & Howard Hansen, Dewitt, MI
Annie & Leonard Esposito, Potsdam, NY
Stuart Krueger & Kimmi Varney, Chesterfield, MI

FAMILY

Rodolfo Perez, Wildomar, CA
Josh Ferguson, Temecula, CA
Christopher Maley, Otsego, MI
Karen Harshbarger, Oxford, NC
Robert Verrando, Yorkville, IL
Jack Stover, Archbold, OH
Ross M. Peterson, St. George, UT
Jamie Holzheimer, Middlefield, OH
Penni Putao, Prescott Valley, AZ
Gerald Dennany, Kalamazoo, MI
David Williams, Brecksville, OH
John Battjes, Grand Rapids, MI
Catherine Heimann, Galesburg, IL
Laverne Payne, Crystal Lake, IL
Jeffrey Smith, Jackson, WI
Mark & Cathy Thompson, Clio, MI
Tom Hutchinson, Sturgeon, MO
William Liimatainen, Monroe, WI
Robert Brohl, Stommel, Germany
Alan & Brenda Witte, Zeeland, MI
Scott Cummings, Mansfield, MA
James Mc Innis, Tucson, AZ
Peter McLaughlin, Wellesley, MA
William & Sally Grant, Gardnerville, NV
Steve Baldwin, Granville, OH
Ollie Kemplin, Laotto, IN

Ray McMahan, Naperville, IL
Larry Haddon, Clare, MI
Jeri Earl, Palmyra, PA
Cindy Ogle, Chalfont, PA
Josh Madden, Ravenna, OH
Wayne & Peggy Elwell, East Leroy, MI
Davis West, Saline, MI
Chuck Walker, Gradville, MI
Charles (Bob) Paterson, Port St. Lucie, FL
Bill & Carol Wilber, Marshall, MI
Rick, Claudette & Gary Russell, Marshall, MI
Ball Lear, Syracuse, NY
Tom Crooks, Gobles, MI
John Ward, Spring Court, MI
Dale Tilley, Marshall, MI
Joe Cairo, Washington, MI
Don Hotton, Washington, MI
Albert Beebe, Alma, WV
Phil McKiernan, Shelbyville, MI
John & Susan Holmes, Williams Bay, WI
Craig Hansen, Crown Point, IN
Tedd & Sherry Snyder, Marion, MI
Charles Kraut, Edison, NJ
Brenda Blain, Lake, MI
David Smith, Richmond, IN

BRICK MEMORIALS

The Illinois Region MARC in memory of Carl Kalbhen
Ron Peterson
The Acorn A's in memory of Leslie Ganahl
Rudy & Lori Perez
Shirley Adema in memory of Henry Adema
Craig & Jeanne Leifheit in memory of Lawrence Leifheit
Craig & Jeanne Leifheit in memory of Bert Henne
Bruce & Janet Winslow
Josh Ferguson and the Ferguson Family

Rich & Penni Flammang in memory of Audrey L. Flammang
Laverne Torrence in memory of Jim Torrence
The Diablo A's Chapter MAFCA in memory of Robert "Bob" Reed
The Walla Walla Sweet A's in memory of Craig Grieb
Brent J. Holleran in memory of Robert P. Holleran
The Muskegon Port Side A's in honor of Ginger Meurer
Larry Wallace in honor of James & Patti Wallace
The Model A Ford Club of America in memory of John Coulter Frazee

The Model A Ford Club of America in memory of
Dan H. Foulk
The Active A's Car Club in memory of Chuck Storm

Ray & Bea Baker in memory of Bobby Maslin
Marc & Patricia Smith in honor of Edgar & Phyllis
Smith

MEMORIAL DONATIONS

- Chris Green in honor of Steve Burton, Script A Region
- The Auburn A's in memory of Lorene Cole
- The Hoosier A Ford Club in memory of Don Z. Horner
- MAFCA Bakersfield Chapter in memory of Betty Lou Hylton Wachob
- The Lowcountry Model A Ford Club in memory of Robert Coleman
- The St. Patrick's Day Parade Committee Inc. in memory of Robert Coleman
- Jimmy & Rosalyn Finnegan in memory of Robert Coleman
- John Royall in memory of Robert Coleman
- David & Jo Lynne Johnson in memory of Aldie E. Johnson Jr.
- The Auburn A's, MAFCA in memory of Sharon Eskelson
- The Auburn A's, MAFCA in memory of Bev Aitchison
- The Auburn A's, MAFCA in memory of Jim Spawn
- The Salt Creek Chapter, MAFCA in memory of Alice Nelson
- The Salt Creek Chapter, MAFCA in memory of Lee Carlson
- The Salt Creek Chapter, MAFCA in memory of Bill Gorski
- The Evergreen Chapter, MAFCA in memory of Elizabeth Roach

2022-2023 Board of Trustees Officers

President	Joe Fox	president@maffi.org
Vice President	Katie Herrick	vicepresident@maffi.org
Secretary	Mike Dubreuil	secretary@maffi.org
Treasurer	Ross Milne	treasurer@maffi.org

[Click here for all Trustees Email addresses](#)



[Click here to go to MAFFI's Facebook page.](#)

Open the QR Code to go to MAFFI's Facebook page.

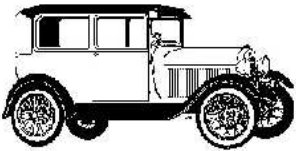


Christmas in The Museum



The "A" Preserver
Model A Ford Foundation, Inc.
P O Box 28
Peotone, IL. 60468-0028.

Non-Profit Org.
US Postage
PAID
Boston, MA
Permit #51544



Preserving The Model A Era for Future Generations

